

CARGO TRAILER



Inverted Caster Pallet Dolly

FEATURES:

- Cargo Capacity: 15,000 lbs. (6803.88 kg)
- 20-25 MPH Towing Speed
- Stops for LD-3 and 108" Containers, 88" and 96" Pallets
- Towbar Actuated Parking Brakes
- Caster Bed Equipped With Sealed Inverted Casters
- Lead Edge Rollers to Protect Casters
- Forklift Tineway Openings
- Caster Protection Reduces Caster Damage by up to 90%
- All Sealed Bearings
- Main Frame Corners Radiused to Minimize Collision Damage
- Epoxy Powdercoated per Customer Color

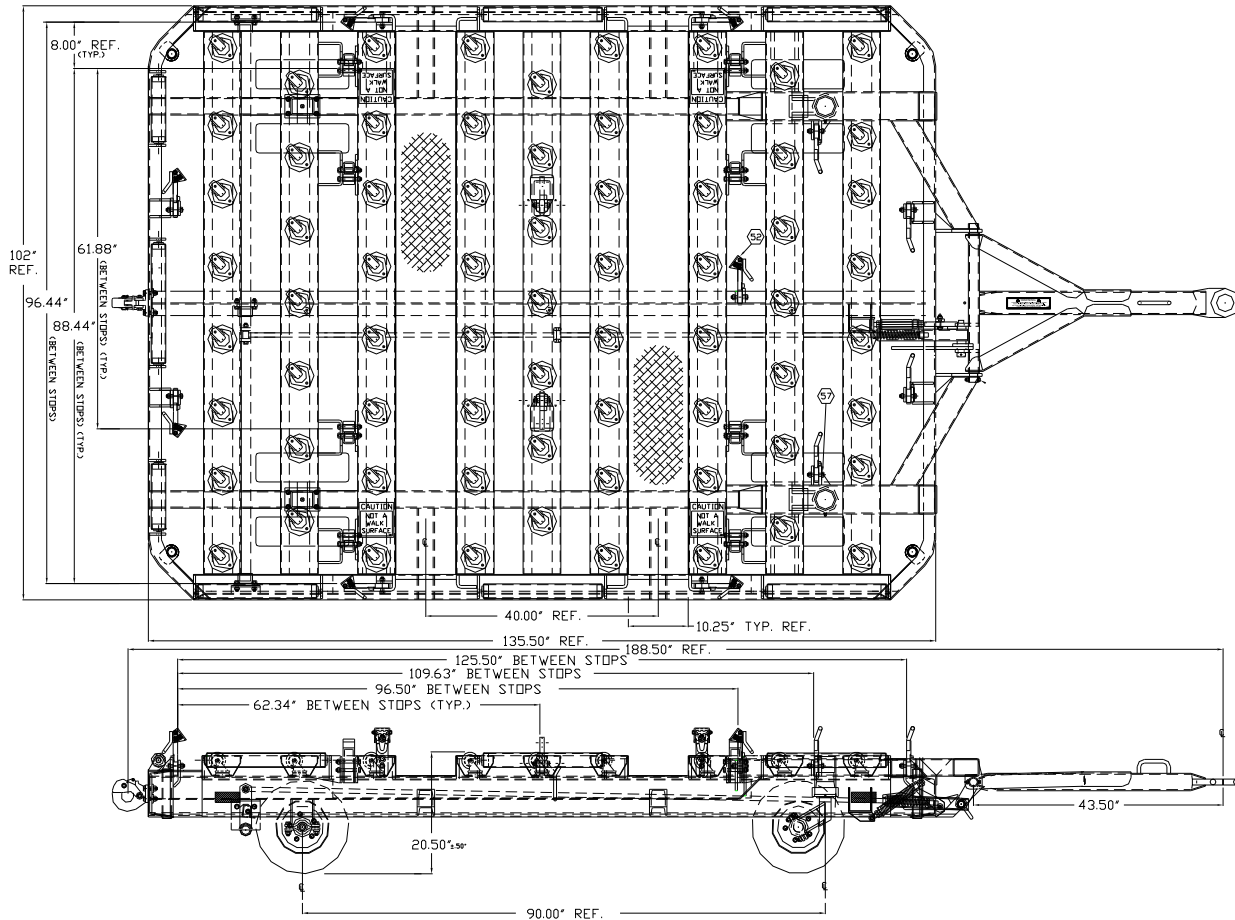
OPTIONAL:

- Side Rub Rails
- Hot Dip Galvanizing

"FIRST CLASS DOESN'T HAVE TO COST MORE"

WASP, Inc.
Box 249 ■ Glenwood, MN 56334
(320) 634-5885 FAX (320) 634-5881

CARGO TRAILER



Pallet Dolly, Inverted Caster Type

SPECIFICATIONS:

WEIGHT: 2200 lbs. (997.90 kg)

TRACK WIDTH: 88" (2235.2 mm)

TIRES: 4.00 x 8, Solid Rubber.

CASTER KING PIN: 2" Dia. Stressproof, with Sealed Timken Thrust Bearing.

REAR HITCH: Spring-loaded, E-Type or Pintle Hook.

BED CASTERS: 300 lbs. (136.08 kg) Capacity Each.

PALLET STOPS: Manual, Spring-Loaded, Detented.

REFLECTORS: Amber in Front, Red in Rear.

WHEEL SPINDLES: 1-3/8" Dia. Stressproof.

HUBS: 1-3/8" Dia. with Sealed Timken Bearings.

RUNNING GEAR: Dual-Wheeled Swivel Casters in Front, Dual-Wheeled Rigid Casters in Rear.

RIMS: 7 GA, 5-Bolt, 4-1/2" BC, 2-piece Demountable.

LEAD EDGE ROLLERS: 2-1/2" Dia., 11 GA with 11/16" Hex Shaft.

WASP, Inc.

Box 249 ■ Glenwood, MN 56334

(320) 634-5885 FAX (320) 634-5881