

# CREW ACCESS STAIR

---



## Adjustable Height Spiral Box Type

---

### FEATURES:

- Designed to be Manuevered by Hand
- Fixed (185", 4699 mm) and Adjustable (171-195", 4343.4-4953 mm) Height Models Available
- Large Footprint for Maximum Stability
- Full Width Rubber Bumper at Aircraft Interface
- Safety Features Per OSHA Guidelines
- Towbar Actuated Parking Brake
- Breaks Down Easily to 102" (2590.8 mm) Shipping Width
- Epoxy Powdercoated per Customer Color

### OPTIONAL:

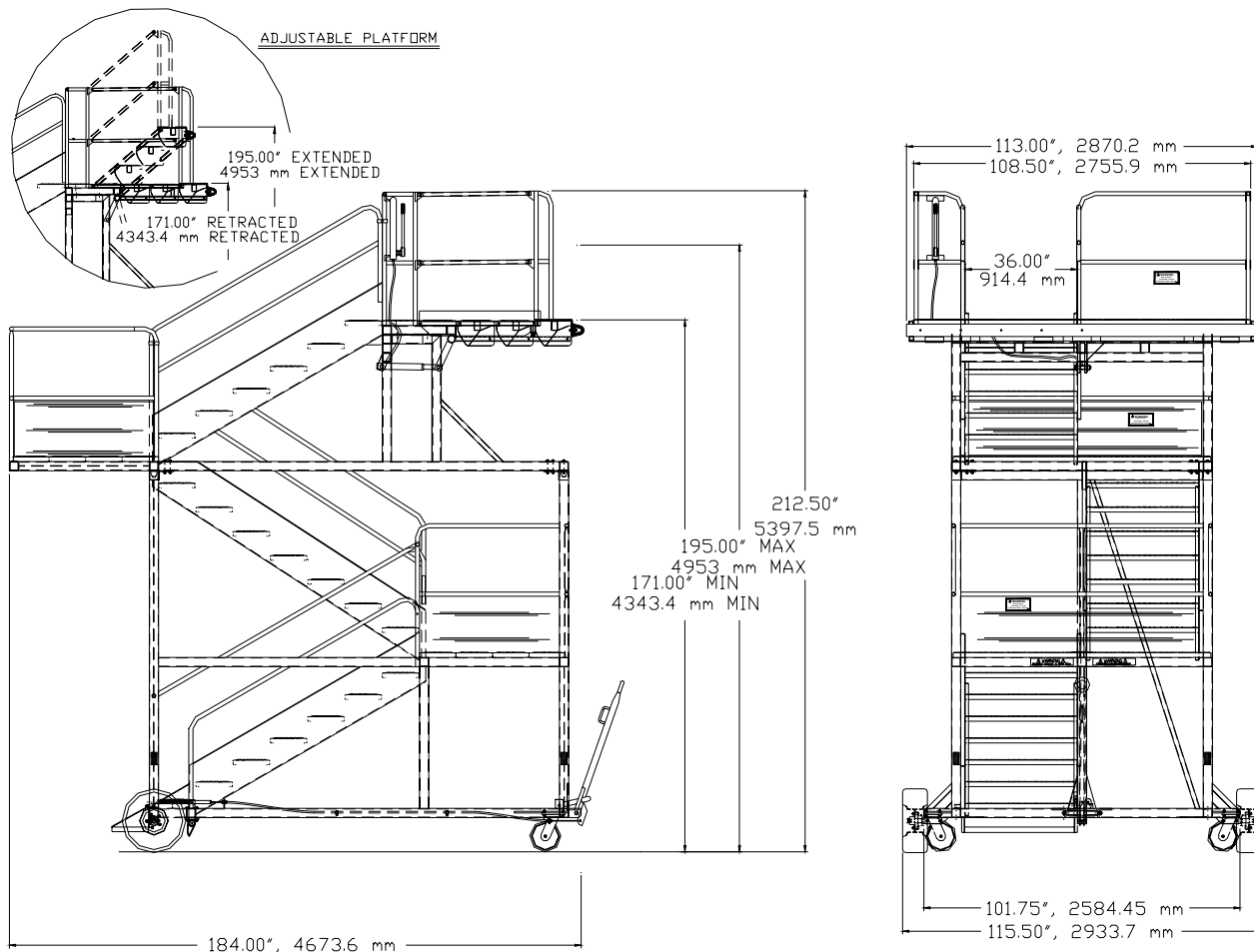
- Hot Dip Galvanizing

***"FIRST CLASS DOESN'T HAVE TO COST MORE"***

---

Watkins Aircraft Support Products  
Box 249 ■ Glenwood, MN 56334  
(320) 634-5885 FAX (320) 634-5881

# CREW ACCESS STAIR



## Adjustable Height Spiral Box Type

### SPECIFICATIONS:

**CASTERS:** 10" Dia. Swivel With Solid Urethane Tires.

**TIRES:** 20.5 x 8 x 10, 10 Ply Pneumatic.

**CONSTRUCTION:** Tubular Steel Main Frame With Gripstrut Steps and Platforms. Other Walk Surfaces Optional.

**RUNNING GEAR:** Casters on Front, Fixed Rear Axle.

**PARKING BRAKE:** Towbar Actuated.

**CAPACITY:** 1000 lbs. (453.6 kg)

Watkins Aircraft Support Products  
Box 249 ■ Glenwood, MN 56334  
(320) 634-5885 FAX (320) 634-5881