

TURNTABLE DOLLY

Model A04284D Turntable Container Dolly



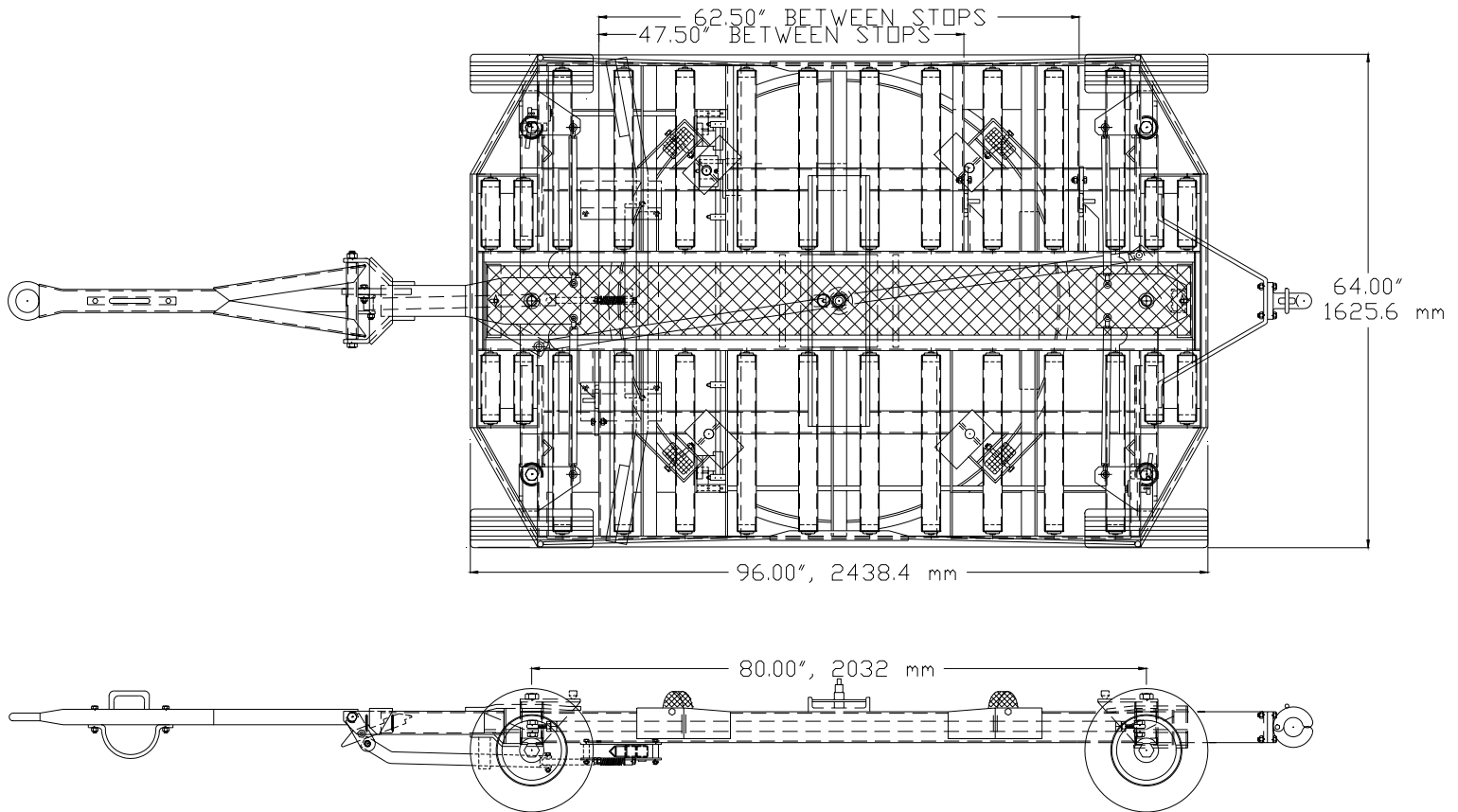
FEATURES:

- Deck Size: LD-2/LD-3
- 3500 lbs. (1587.57 kg) Cargo Capacity
- 20 MPH Towing Speed
- Heavy Duty Perimeter Frame
- Towbar Actuated Front Wheel Parking Brakes
- Double Ackerman Steering
- Corners Tapered to Minimize Collision Damage
- Flip-Up Stops for LD-2/LD-3
- Vertical Restraints
- Epoxy Powdercoated per Customer Color
- Optional Hot Dip Galvanizing

“FIRST CLASS DOESN'T HAVE TO COST MORE”

Watkins Aircraft Support Products
Box 249 ■ Glenwood, MN 56334
(320) 634-5885 FAX (320) 634-5881

LD-2/LD-3 Turntable Dolly



SPECIFICATIONS:

WEIGHT: 1570 lbs. (712.14 kg)

TRACK WIDTH: 60" (1524 mm)

TIRES: 4.00 x 8 x 16" OD - Solid Rubber.

HUBS: 1-1/4" Dia., with sealed Timken bearings.

WHEEL SPINDLES: 1-3/4" Dia.

TIE ROD ENDS: 3/4" automotive type.

BED ROLLERS: 22 - 2-1/2" Dia., 11 GA., with sealed bearings and 11/16" hex shaft.

REAR HITCH: Pintle.

REFLECTORS: Per customer specifications.

Watkins Aircraft Support Products
Box 249 ■ Glenwood, MN 56334
(320) 634-5885 FAX (320) 634-5881