

CREW ACCESS STAIR



Fixed Height Spiral Box Type

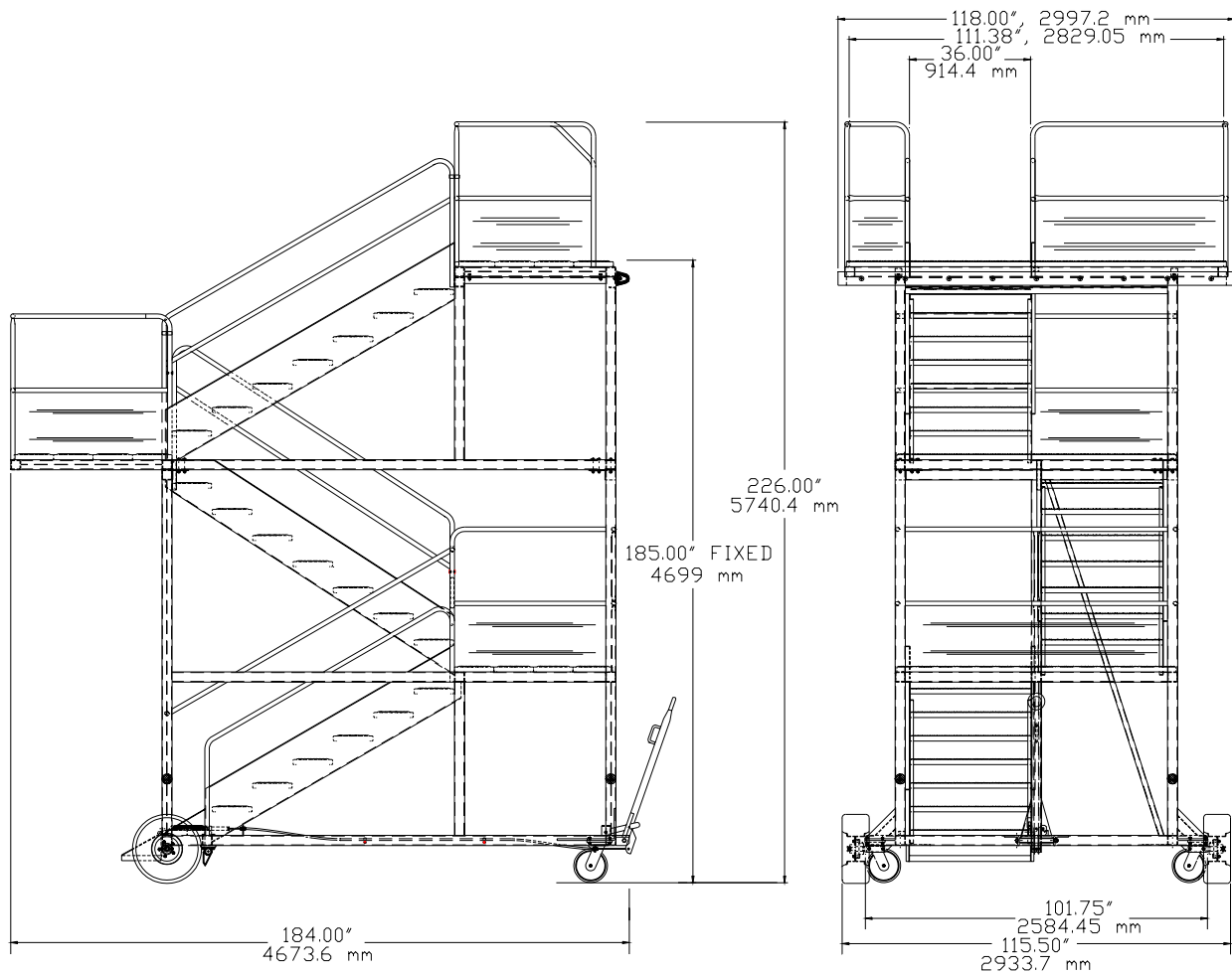
FEATURES:

- Designed to be Maneuvered by Hand
- Gripstrut Steps and Platforms
- High Stability Inherent in Design
- Rubber “D” Bumper on Lead Edge
- Safety Features Per OSHA Guidelines
- Equipped With Towbar Actuated Parking Brake
- 102” (2590.8 mm) Shipping Width
- Epoxy Powdercoated per Customer Color

- Optional Hot Dip Galvanizing
- Optional Pans Under All Steps and Platforms

“FIRST CLASS DOESN’T HAVE TO COST MORE”

CREW ACCESS STAIR



Fixed Height Spiral Box Type

SPECIFICATIONS:

CASTERS: 10" Dia. Swivel With Solid Urethane Tires.

RUNNING GEAR: Fixed Rear Axle, Casters on Front.

TIRES: 20.5 x 8 x 10, 10 Ply Pneumatic.

PARKING BRAKE: Towbar Actuated.

CONSTRUCTION: Tubular Steel Main Frame With Gripstrut Steps and Platforms.

CAPACITY: 1000 LBS. (453.59 kg)