

MOBILE SCISSOR LIFT



FEATURES:

- Gasoline (25 HP Kohler®) Engine
- Solid Tires
- Easily Towable
- Two Emergency Stops
- Control Stations Dually Located at Each Side of Deck
- Epoxy Powdercoated per Customer Color

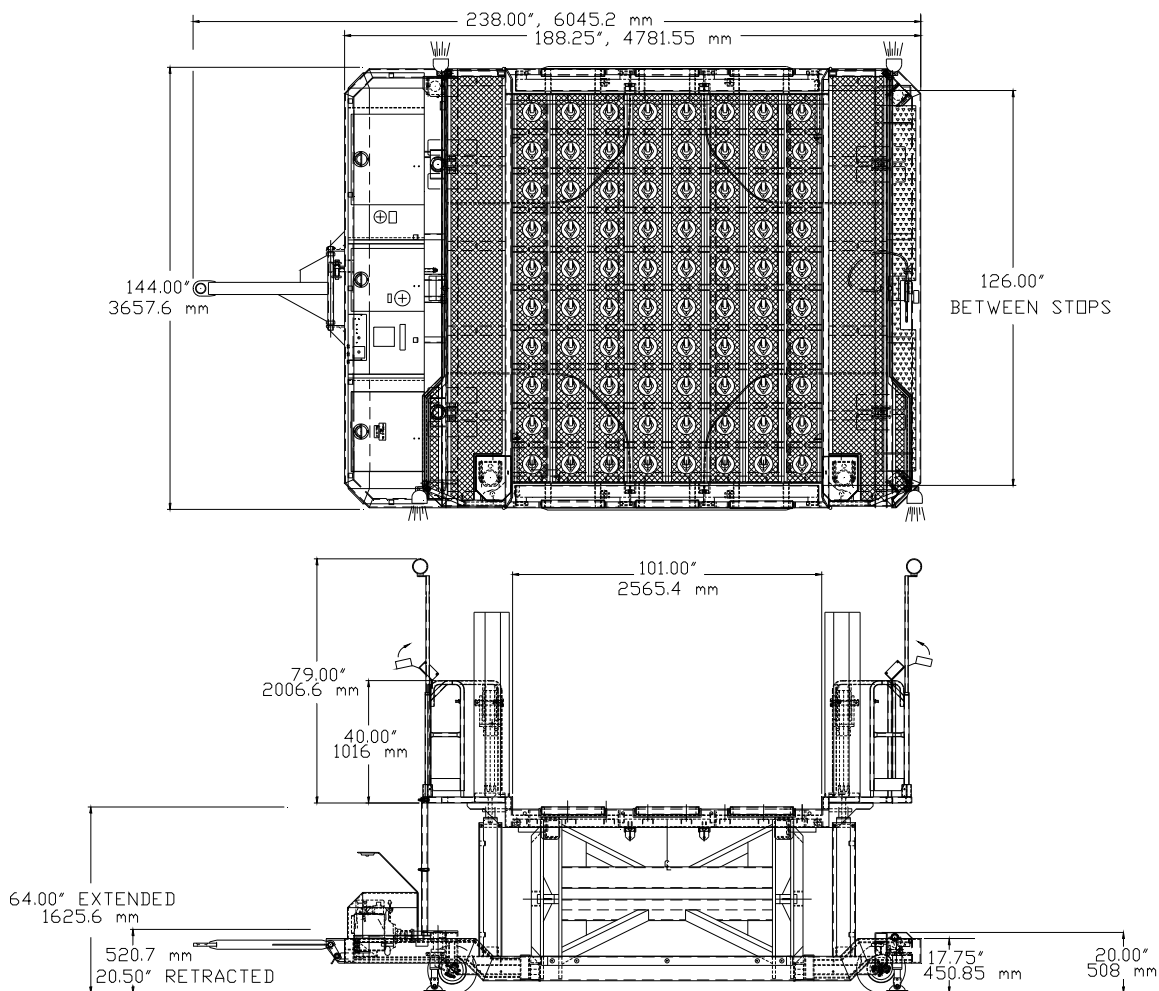
OPTIONAL:

- Kubota® Diesel Engine
- Roller Bed Deck
- Hot Dip Galvanizing

“FIRST CLASS DOESN’T HAVE TO COST MORE”

Watkins Aircraft Support Products
Box 249 ■ Glenwood, MN 56334
(320) 634-5885 FAX (320) 634-5881

MOBILE SCISSOR LIFT



SPECIFICATIONS:

WEIGHT: 12,500 LBS. (5669.9 kg)

PLATFORM RANGE: 20" (508 mm) TO 64" (1625.6 mm)

OVERALL LENGTH:

Towbar Extended - 238" (6045.2 mm)

Towbar Retracted - 200" (5080 mm)

DECK TYPE: Swivel Caster with Gripstrut Walking Surface

ENGINE: 25 HP Kohler® Gasoline

BRAKES: Orscheln Lever Controlled Parking

HYDRAULIC SYSTEM:

9 GPM Gear Type Pump

2 - 4" x 22" Lift Cylinders

4 - 3" x 4" Stabilizer Cylinders

12 Volt DC, 2 GPM Emergency Pump

Open Center, 12 Volt DC Solenoid Control Valve

LIFTING CAPACITY: 15,000 LBS. (6803.88 kg)

DECK SIZE: 101" (2565.4 mm) X 126" (3200.4 mm)

OVERALL WIDTH: Excluding Rub Rails - 143" (3632.2 mm)

OVERALL HEIGHT: To Top of Lights - 102" (2590.8 mm)

PALLET STOPS: Ramp On with Lever Actuated Override

STEERING: Front Caster Wheels, Rigid Rear Wheels

TIRES: 4.00 x 8 x 16 SOLID

ELECTRICAL SYSTEM:

12 Volt DC Battery Power

#624 Delco Battery

Control Stations at Each Side of Deck

4 Work Lights at Each Corner of Deck

Mushroom Button Emergency Stops at Each Control Station

Watkins Aircraft Support Products
Box 249 ■ Glenwood, MN 56334
(320) 634-5885 FAX (320) 634-5881