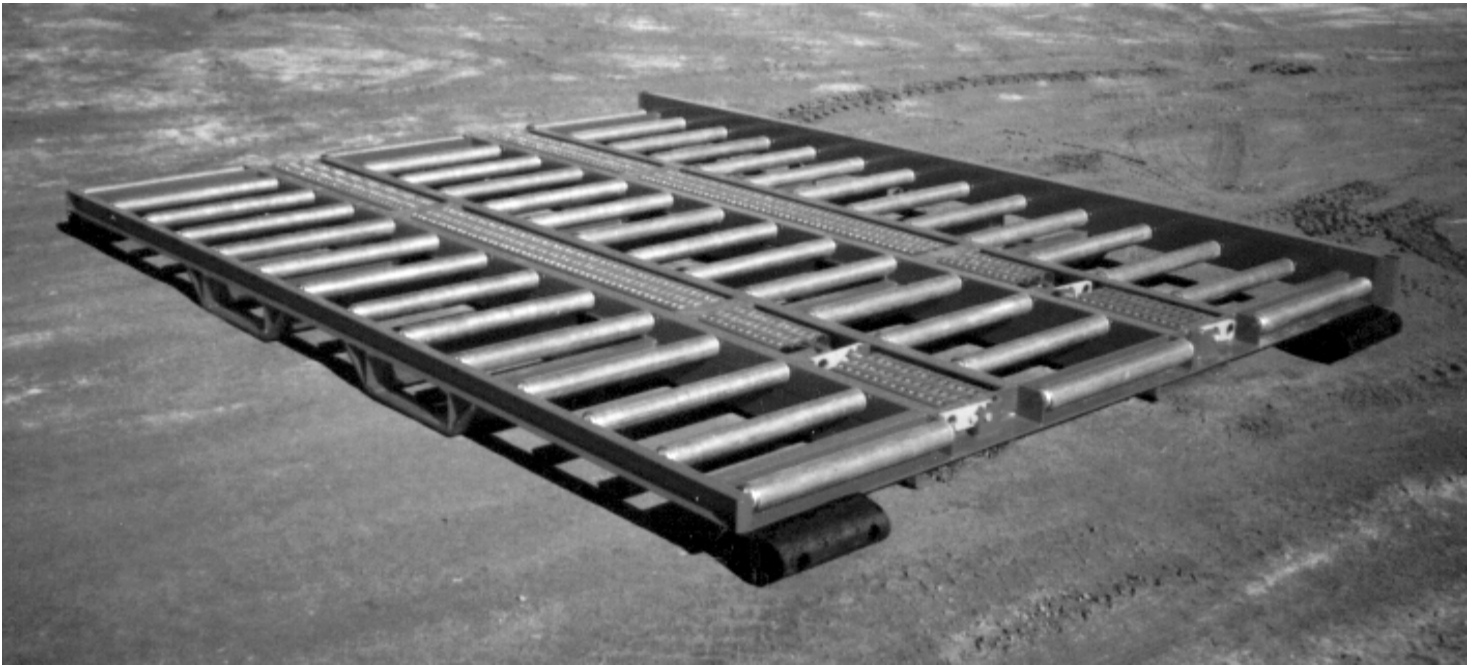


MANUAL SLAVE PALLET



Heavy Duty Roller Bed Type

FEATURES:

- Forklift from Side or End
- Sealed Roller Bearings
- All Sizes of Slave Pallets Available
- Epoxy Powercoated per Customer Color

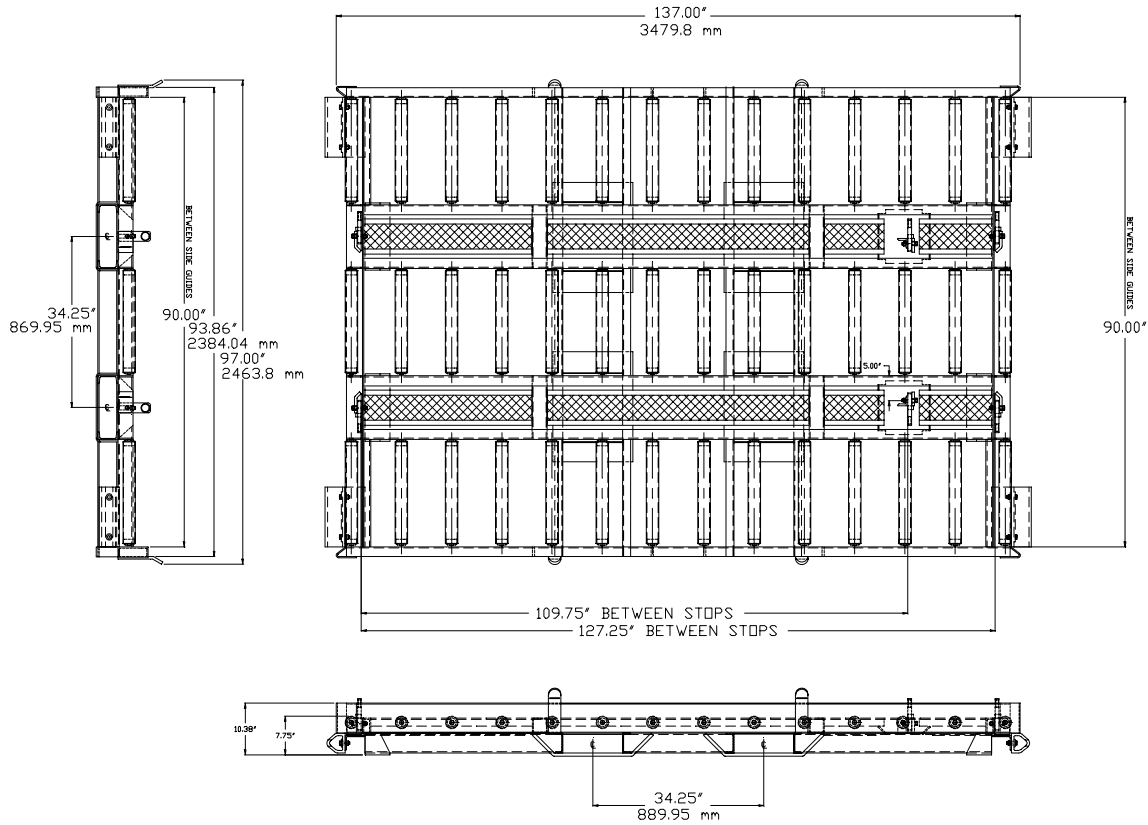
OPTIONAL:

- Gripstrut Walkways
- Side Load Design
- Gaps Filled Between Rollers
- Connecting Links
- Hot Dip Galvanizing

“FIRST CLASS DOESN'T HAVE TO COST MORE”

Watkins Aircraft Support Products
Box 249 ■ Glenwood, MN 56334
(320) 634-5885 FAX (320) 634-5881

MANUAL SLAVE PALLET



SPECIFICATIONS:

WEIGHT: 1150 lbs. (521.63 kg)

CAPACITY: 15,000 lbs. (6803.88 kg)

MAIN FRAME: 4" Structural Channel , 6" Structural Angle, 4" x 8" Tineways.

PALLET STOPS: Manual, Spring-Loaded, Detented.

ROLLERS: 2-1/2" Dia. x 11 GA. with 11/16" Hex Shaft.

Watkins Aircraft Support Products
Box 249 ■ Glenwood, MN 56334
(320) 634-5885 FAX (320) 634-5881